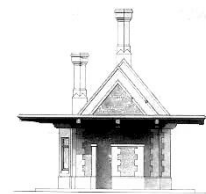




The Old Ticket Office, Culham

GWR postcards



Whilst our collection is illustrated and described in greater detail in the relevant pages of our website, we thought it might be useful to produce a reference list of picture postcards produced by the GWR. It should be noted that this list should not be taken as being definitive as it shows only those cards which are either in our collection, or those which we have either seen an example of or know for certain to have existed. There will be many gaps, especially when considering correspondence cards and smaller or individual card issues. Our numbering may not tally with that in other reference sources.

London views

It is believed that the Great Western Railway first started to sell postcards in 1898. This was a limited set of nine views of London landmarks which took the form of a vignette with space left for a message on the front. The name of the railway company and the image title were printed on the front of the card, and down the left edge was printed **Picture Postcard Co. Ltd., 6 Draper's Gardens, London, E.C.** The back was left plain for the address as divided backs were not to be allowed by the Post Office until 1902. The cards were 5½"x3¾" and printed by the short-lived *Picture Postcard Company Co. Ltd.* of London which is thought to have only operated between 1898 and early 1901.

Albert Memorial, Kensington Gardens
Bank of England
Cheapside, looking West
Houses of Parliament, Westminster
Mansion House
Tower Bridge
Trafalgar Square
Trafalgar Square and National Gallery
Westminster Abbey

General cards

The same company went on to produce a second series of at least eighty different views for the GWR. These cards were slightly smaller in size, being 5"x3¼", and carried a half tone image surrounded by a decorative, travel information, space for a message, and the railway company title. Along the bottom left edge was printed **Picture Postcard Co. Ltd., 6 Draper's Gardens, London, E.C.** They also carry **P.G.B.** at the bottom right, although it is not known what this might refer to.

Cards in this second series were probably sold in sets of six and were certainly available from postcard machines at principal stations. Several reference books suggest this second series of cards was produced from 1899, but one

example in our collection bears a hand written message dated 1898.

Barnstaple. Lantern Hill, Ilfracombe
Barnstaple. The Watersmeet, Lynmouth
Bath. The Abbey
Bath. The Grand Pump Room
Bath. The Lower Avon
Bath. The Roman Baths
Birmingham. New Street
Birmingham. Town Hall
Birmingham. Law Courts
Birmingham. Council House
Cardiff. The Gardens, Penarth
Carmarthen. (Carmarthen Junction) Coracle Men
Cheltenham. The Promenade
Cheltenham. Pittville Gardens
Clevedon. Clevedon
Clevedon. Lady Bay
Dartmouth. The College
Dartmouth. The Castle
Dartmouth. "The Britannia"
Dartmouth. "The Discovery"
Dawlish. Dawlish
Dawlish. Dawlish (alternate image)
Devonport. Devonport
Devonport. Cremill Point, Devonport
Dolgelley. Torrent Walk
Dolgelley. Dolgelly and Cader Idris
Exeter. Exeter Cathedral
Exeter. The Nave, Exeter Cathedral
Exeter. The Guildhall, Exeter
Gloucester. The Cathedral
Gloucester. Cathedral Nave
Gloucester. The New Inn
Great Malvern, Swan Pool
Great Malvern, The Abbey Gate
Henley-on-Thames. Henley-on-Thames
Henley-on-Thames. The Regatta
Leamington. The Crescent
Leamington. In the Gardens
Llangollen. The Bridge
Llangollen. Horse Shoe Falls
Llangollen. Valle Crucis Abbey
Maidenhead. Cliveden Woods from Ferry
Maidenhead. Cliveden Reach and House

Minehead. Minehead
 Minehead. Dunster Castle
 Newquay. On the Beach
 Newquay. Bedruthan Steps
 Oswestry. The Cross
 Oxford. Oriol Quadrangle
 Oxford. The Isis
 Oxford. Magdalen College and Bridge
 Oxford. Exeter College Gardens
 Oxford. View from Magdalen Tower
 Oxford. St. John's Church
 Penzance. Lands End
 Penzance. St. Michael's Mount
 Penzance. Lizard Head
 Penzance. St. Mary's, Scilly Isles
 Plymouth. Eddystone Lighthouse
 Plymouth. The Pier, Plymouth
 St. Ives. St. Ives
 Salisbury. Salisbury Cathedral
 Salisbury - Stonehenge
 Southampton. Western Shore
 Stratford-on-Avon. Ann Hathaway's Cottage
 Stratford-on-Avon, Charlecote from Church Avenue
 Stratford-on-Avon. Holy Trinity Church
 Stratford-on-Avon. Memorial Theatre
 Stratford-on-Avon. Shakespeare's House
 Swansea. Mumbles Head and Lighthouse
 Teignmouth. Teignmouth
 Tenby. Tenby
 Tintern. The Abbey
 Torquay. Torquay
 Torquay. Coast View near Torquay
 Totnes, High Street
 Truro. The Cathedral (Interior)
 Warwick. Warwick Castle
 Warwick. Guy's Cliff House
 Warwick, Guy's Cliff Mill
 Warwick, Kenilworth Castle
 Weston-Super-Mare, The Sands
 Weston-Super-Mare. Weston-Super-Mare
 Weymouth. The Harbour, Eventide
 Weymouth, Jubilee Clock Tower
 Winchester. The Cathedral
 Windsor. Windsor Castle
 Windsor. East Terrace, Windsor Castle

Raphael Tuck cards

In March 1904 the GWR issued a set of 25 collotype cards printed by *Raphael Tuck and Sons* whose company device, an easel and palette, was printed in the space for the stamp. These cards were produced with the split back which was now being allowed by the Post Office and were 5½"x3½" in size. Cards in this set were printed in three different colours, blue, grey or sepia. They could be bought from automatic machines at two for 1d, or one pre-stamped for 1d.

For a complete list of titles reference may be made to Series 1.

Series 1

In October 1904 the GWR issued a second set of 25 collotype cards, and this led to a reprint of the set first published in the March. They were now labelled "**Series 1.**" in the top left of the address side, presumably to distinguish them from the new series. A few of the images were amended slightly when published as Series 1 and the word "Goods" was dropped from the title of card 7 which became "Latest Type Great Western Engine", but otherwise the cards were basically identical to when first produced save for the addition of the series title and being printed only in sepia.

1. Weymouth and the Landing Stage
2. Great Western Express Passenger Engine. "City of Bath."
3. Royal Waiting Room, Paddington
4. Departure Platforms, Paddington Station
5. Great Western Station Hotel, Paddington
6. Early Great Western Broad Gauge Engine "Vulcan"
7. Latest Type Great Western Engine (No 98)
8. Temple Meads Railway Station Bristol
9. Entrance to Great Western Tunnel, Twerton, Bath
10. How Our Forefathers Travelled in the "Forties"
11. "Up the River" Henley-on-Thames
12. The Vale of LLangollen
13. Great Western Railway Bridge, Maidenhead
14. The Great Western Royal Train
15. Windsor Castle
16. Great Western Railway Bridge, Saltash built 1859
17. Great Western Viaduct Ivybridge, Plymouth
18. Beautiful Berwyn
19. A Famous Great Western Broad Gauge Engine "North Star"
20. A Charming Great Western Hotel, Treganna Castle, St. Ives
21. One of the Great Western Railway Channel Islands Fleet
22. Great Western Railway Bridge over the Severn, Arley
23. Great Western Viaduct, Pontcysyllte, near Ruabon
24. The Lion Rock, Cheddar
25. An Old Cornish Railway Viaduct, Trenance, St. Austell

Series 2

October 1904 saw the publication of Series 2, another 25 cards printed by *Raphael Tuck and Sons*. These sepia collotype cards again bore the Tuck company device (an easel and palette) in the space for the stamp and now also carried a small version of it on the front. All cards in this series had "**Series 2.**" printed in the top left corner of the address side and the full set of 25 cost 1/- (one shilling).

26. Pittville Lake, Cheltenham. Great Western Railway
27. Oxford. Great Western Railway
28. Magdalen Tower Oxford. Great Western Railway
29. On the Way to Mumbles Head from Swansea
30. Warwick Castle. Great Western Railway
31. Old Mill Guy's Cliff near Warwick. Great Western Railway
32. Tree used as Booking Office, Moreton-on-Lugg. Great Western Railway
33. Pandy Mill near Dolgelly. Great Western Railway
34. The Lake at Bala. Great Western Railway
35. Shrewsbury. Great Western Railway
36. Exterior Paddington (GWR) Station 1838
37. Interior Paddington (GWR) Station 1854
38. Slough (GWR) Station 1845
39. Quadrangle Eton College. Windsor & Eton (GWR) Station
40. Playing Fields. Eton. Windsor & Eton (GWR) Station
41. On the Way to Beaconsfield by GWR Motor Car
42. Oak Growing Out of a Beech. Burnham Beeches by GWR Motor Car from Slough
43. Broad Gauge Engine (GWR) Lord of the Isles
44. Latest Type Passenger Engine (GWR) Albion (No. 171)
45. Compound Engine La France Constructed in France for the Great Western Railway (No. 102)
46. Swindon (GWR) I 1847
47. Bath City. Great Western Railway
48. Great Western Railway. Map of the Cornish Riviera
49. Penzance (GWR) Station and Harbour
50. The Gorge near Cheddar. Great Western Railway

Series 3

A series of twelve miniature lithograph posters was published in March 1905 and were sold as a set of 12 for sixpence. These were produced by *Messrs. Andrew Reid & Co* of Newcastle-on-Tyne and carried the words **G.W. Series No. 3** and **Pictorial Poster Fac-simile** on the picture side. These cards rarely come up for sale and those that do command a very high price, so it is unlikely that we will be able to add any to our collection. We believe that they were all featured in a colour supplement to the May 1907 edition of the *Great Western Railway Magazine*.

Several other individual poster cards were produced over the years being printed by a variety of printers but, whilst being similar, they were not part of any set and bore no company branding other than that on the featured poster itself. Examples of these cards are also very rare

51. Cornish Riviera – An Ideal Health and Pleasure Resort
52. Blarney Castle. Paddington and Waterford in 13 Hrs.
53. To the Lizard. By Rail and Motor in 8 Hours
54. Land's End. By Rail and Motor 8 Hours from Paddington
55. Dining Cars to Bristol, Exeter, Torquay, Plymouth, Penzance, Newport, Cardiff
56. North Wales. Free Fishing in Bala Lake
57. Xmas Excursions
58. Mounts Bay by Night
59. Week-End Tickets. All the Year Round
60. Picturesque Wales. Tourist Tickets
61. Direct Route to Weymouth
62. To the Upper Thames. Cheap Daily Tickets

Series 4

This series of 25 gravure cards appeared in September 1905 and cost 1/- (one shilling) for the complete set. These were the first to carry the company crest composed of the two shields of London and Bristol under which was a scroll with the words *Great Western Railway*. The crest was printed at the top left of the address side of the cards, and **G.W. "Series 4."** was printed above it.

63. Perivale Church. Great Western Railway, Perivale Halt
64. Cliveden Woods. By G.W.R. to Maidenhead
65. Reading from Caversham. Great Western Railway
66. Christchurch, Oxford. Great Western Railway
67. Stratford-on-Avon. Nearest Station, Great Western Railway, Stratford
68. Worcester Cathedral. Great Western Railway
69. Leamington. Great Western Railway
70. Horse Shoe Falls by Great Western Railway to Berwyn
71. Valle Crucis Abbey, by Great Western Railway to Berwyn
72. Wells Cathedral by Great Western Railway
73. Footbridge to Old Mill by GWR to Cynwydd
74. The Lower Avon, Bath. Great Western Railway
75. Oystermouth Bay. By Great Western Railway to Swansea
76. Bristol Cathedral and College Green. Great Western Railway
77. Minehead. Great Western Railway
78. The Beach, Teignmouth. Great Western Railway
79. Dawlish. Great Western Railway
80. The Cornish Riviera Express near Dawlish. Great Western Railway
81. Paignton. Great Western Railway
82. Dartmouth and Kingswear Castles. Nearest Station GWR Kingswear
83. Fowey (Cornish Riviera) Great Western Railway
84. Truro Cathedral and River Fal. Great Western Railway
85. Newlyn Harbour. Nearest Station GWR Penzance
86. Hugh Town, St. Marys, Scilly. By Great Western Railway to Penzance
87. Great Western Railway Express Engine. (County Class)

Series 5

This was the third and final series to be published in 1905. These were the first 'view' cards to be printed in colour and could be bought as a set of 25 for 1/-. With three exceptions, all cards carried the title on the front with the words 'Great Western Railway' below. Aberystwyth had the word 'via' added, whilst Glastonbury said instead *By G.W.R. to Wells* and similarly Lynmouth said *By G.W.R. via Barnstaple*. On the address side the cards bore the same 'two shields' device as that on Series 4 with **G.W.R. Series 5.** printed above.

1. The "Cornishman" near Box
2. The Beach, Aberystwyth, via Great Western Railway
3. On the Tryweryn, Bala
4. A Fishpond, Burnham Beeches
5. On the Wye, Chepstow
6. Suspension Bridge, Clifton
7. Upper Falls, Dolgellay
8. Torr Steps, Dulverton
9. Old Yarn Market, Conegar Tower, Dunster
10. The Cathedral, Exeter
11. Glastonbury Abbey. By GWR to Wells
12. The Harbour, Ilfracombe
13. Lynmouth. By GWR via Barnstaple
14. St. Michael's Mount, Marazion
15. The River and Church, Marlow
16. College Barges on the Thames, Oxford
17. The Hoe Promenade, Plymouth
18. Memorial Theatre, Stratford-on-Avon
19. The Sands, Tenby
20. The Abbey, Tintern
21. Cockington Forge, Torquay
22. Torquay from Rock Walk
23. Weston-Super-Mare
24. The Esplanade, Weymouth
25. Windsor Castle

Series 6

This series of 12 black and white photographic cards was published from July 1908 and was sold as a set for one shilling. With the sole exception of the first card, which shows a passenger express train at speed on the main line, it featured posed studies of a variety of railway locomotives of the GWR. The address side carried a new Company device which was formed from the joining of the two shields of London and Bristol with a scroll bearing the words 'Great Western Railway' beneath. **SERIES 6** was printed below the scroll.

1. Great Western Railway 3.30.p.m. Express from Paddington. Engine No. 178 "Kirkland."
2. G.W.R.-"City" Class. "City of Bath."
3. G.W.R.- Atlantic Type "Scot" Class "Ivanhoe."
4. G.W.R.-"Star" Class "Evening Star."
5. G.W.R.-Glehn Compound. "La France."
6. G.W.R.-Old Broad Gauge "Single" Wheel "Bulkeley."
7. G.W.R.-"Single" Wheel. "Achilles."

8. G.W.R. Six-Coupled Bogie Passenger Engine. "Viscount Churchill."
9. G.W.R.-"County" Class. "County of Radnor."
10. G.W.R.-Glehn Compound Engine No. 104
11. G.W.R.-"Consolidation" Goods Engine. No.2803
12. G.W.R.-Double-End Tank Engine No. 3120.

Series 7

Ready for the summer season of 1908, the GWR published a small series of twelve coloured view cards in the July. The address side was printed in green and carried the same combined shield device as the series 6 cards. The words **G.W.R. Series 7. The Cornish Riviera.** were printed down the left of the address panel. The stamp panel also contained a reminder of the postal rates 'Inland ½d. Foreign 1d.' These cards were sold at 6d for the set.

1. The Hoe, Plymouth
2. St. Ives Bay & Porthminster Beach
3. Royal Albert Bridge, Saltash (from Saltash)
4. Falmouth
5. The Parade, Penzance
6. The Sands, Newquay
7. Mousehole, Penzance
8. Poldhu Marconi Station
9. Looe, Mouth of River
10. Fowey
11. The Palm Walk, Tresco
12. Lands End

Series 8

This series of cards, published in January 1910 sought to promote Fishguard as a port of call for trans-Atlantic liners. They feature Cunard liners, 'Mauretania', which was the first to visit, in August 1909, and 'Lusitania'.

The whole set of 24 sepia collotype cards sold for only 6d. The words **G.W. Series 8. No. x.** were printed on the address side above the earlier company device of two shields above a large scroll. **G.W.R. FISHGUARD HARBOUR, Port of Call Series** was printed down the left hand side.

- 1 GWR Cunard Ocean Express Fishguard-London 261 miles, 4¾ hours
- 2 Dining Saloon. "Ocean Express"
- 3 RMS "Lusitania" sighted approaching Fishguard
- 4 RMS "Mauritania"
- 5 RMS "Mauritania" entering Fishguard Harbour
- 6 RMS "Lusitania" approaching Fishguard
- 7 Passenger Tender approaching RMS "Mauretania" Fishguard Harbour
- 8 RMS "Mauritania" at Anchor, Fishguard Harbour
- 9 RMS "Lusitania" at Anchor, Fishguard Harbour
- 10 RMS "Mauritania" at Fishguard Harbour
- 11 GWR Passenger Tender approaching Quay, Fishguard Harbour
- 12 RMS "Mauritania" at Anchor, Fishguard Harbour
- 13 GWR Tender Transferring Passengers, Fishguard Harbour

- 14 Passengers Transferring to Tender, Fishguard Harbour
- 15 Passengers Transferring to Tender, Fishguard Harbour
- 16 Tender Transferring Mails, Fishguard Harbour
- 17 G.W.R. Mail Tender
- 18 Passenger Tender Leaving RMS "Mauritania"
- 19 RMS "Mauritania" in Fishguard Harbour
- 20 Passengers landing at Fishguard Harbour Station
- 21 Passengers landing at Fishguard Harbour
- 22 Welsh Girls in National Costume at Fishguard
- 23 Landing Mails, Fishguard Harbour Station
- 24 GWR "Ocean Express" leaving Fishguard

Series 9

It is not known when this series of twelve photographic cards of the West Country went on sale. All the titles were suffixed by (*Great Western Railway*) except *Castle Rock, Lynton (via Barnstaple, Great Western Railway), Salcombe – North Sands & Bolt Head (via Kingsbridge, Great Western Railway),* and *The East Lyn & Lynton (via Barnstaple & Great Western Rly)*. All carried on the back **Series 9**. above the company device of two separate shields above a large scroll.

1. Bradley Woods, Newton Abbot
2. Brixham – The Harbour
3. Dawlish from Lea Mount
4. Ilfracombe (Harbour)
5. Ivybridge – The Bridge
6. Kingswear Castle
7. Castle Rock, Lynton (via Barnstaple, Great Western Railway)
8. Plymouth – The Sound & Drake's Island
9. Salcombe – North Sands & Bolt Head (via Kingsbridge, Great Western Railway)
10. Teignmouth
11. The East Lyn & Lynton (via Barnstaple & Great Western Rly)
12. Torquay from Rock Walk

Series 10

This short series of eight cards which were published in 1922 took the form of sepia etchings, all being signed by the artist Joseph Pike. This series was sold as a set in an envelope. The address side bore the company device of twin shields, each with its own latin motto beneath, surmounted by **Series 10**. Whilst the back was printed in brown, down the left hand side **Published by Great Western Railway** was printed in black.

1. Lands End
2. Lynmouth
3. Pembroke Castle
4. St. Michael's Mount, Penzance
5. Shakespeare's House, Stratford-on-Avon
6. The River Wye (from Symonds Yat)
7. Torquay (Harbour)
8. Warwick Castle

Series 11

Believed to have been published in 1924, this series of 24 gravure cards comprised twelve views from Devon and twelve from Cornwall. They actually formed part of two albums, *Glorious Devon* and *The Cornish Riviera*, each containing twelve views with a detachable copy in postcard form. The GWR advertised these as 'Counterfoil Postcard Albums' and they cost 1/- (one shilling) each. The address side of the postcards carried the twin shields of the company at the top centre above the dividing line and **Series No. 11** at the bottom left. Along the left side was printed the two lines **Published by the Great Western Railway, Paddington Station, London, W.2** and **Felix J. C. Pole, General Manager**, whilst the back of the album pictures was left plain.

'Glorious Devon' album

1. Clovelley
2. Dittisham-on-Dart
3. Exeter Cathedral – The Nave
4. Fingle Bridge, Dartmoor
5. Ilfracombe from Hillsboro
6. Lynmouth
7. Salcombe, North Sands and Bolt Head. (via Kingsbridge, Great Western Railway)
8. Pier and Mount Edgcumbe, Plymouth
9. Teignmouth, Sea Front
10. The Harbour, Brixham
11. The Sands, Dawlish
12. Torquay

'The Cornish Riviera' album

We have seen an example of card 15 incorrectly titled *Polruun from Fowey Harbour*. The image is identical to that on the card *Fowey Harbour and Polruan*. This incorrect spelling and description could have been an error when first published which was later corrected.

13. Looe
14. Polperro
15. Polruan from Fowey Harbour
16. Truro Cathedral
17. Cliff Road, Falmouth
18. Glyndune Beach, Falmouth
19. Morrab Gardens, Penzance
20. Kynance Cove
21. Land's End
22. Porthminster Beach, St. Ives
23. St. Ives, Carbis Bay
24. Newquay, Tolcarne Beach

Series 12

This series of eighteen cards was published in 1924 to coincide with the publication of the large book *Cathedrals*, and all the images used on these postcards are shared with the book. The address side was similar to that of Series 11 bearing the twin shields of the company at the top centre above the dividing line and **Series No. 12** at the bottom left. Along the left side was again printed the two lines **Published by the Great Western Railway, Paddington Station, London, W.2** and **Felix J. C. Pole, General Manager**. Additionally, a brief history and description of the cathedral illustrated was printed at the top of the correspondence panel, with the wording sometimes referencing the featured image. Some of these cards were later over-printed with an advertisement for the 'Cathedrals Series' books.

1. Birmingham Cathedral
2. Gloucester Cathedral
3. Gloucester Cathedral, Doorway
4. Gloucester Cathedral, Cloisters
5. Gloucester Cathedral, Choir
6. Hereford Cathedral, 12th Century Font
7. Hereford Cathedral, The Chained Library
8. Hereford Cathedral, Tomb of Thomas of Hereford
9. St. David's Cathedral, Bishop's Palace Ruins
10. St. David's Cathedral, Choir
11. St. David's Cathedral, Rose Window
12. St. David's Cathedral, Ruins of St. Mary's Chapel
13. St. David's Cathedral, Roof of Lantern Tower
14. St. David's Cathedral, Exterior form N.E.
15. St. David's Cathedral, St. David's Casket
16. St. David's Cathedral, St. David's Altar
17. Worcester Cathedral, Choir
18. Worcester Cathedral, Cloisters

Direct Route to Ireland - 1905

Published in 1905, this single coloured poster card was produced to publicise the new GWR route to Ireland via Fishguard. The printer's name, **Andrew Reid & Co., Grey Street, Newcastle-on-Tyne**, can just be made out at the foot of the poster. The address side was plain with no GWR branding.

Fishguard Route Series - 1908

To help publicise their route to Ireland from Fishguard the GWR produced a set of four cards in 1908 for use on their steamers. These green collotype cards all carried the title *Fishguard Route To Ireland* on the front together with the title of the particular card. The words **GREAT WESTERN RAILWAY FISHGUARD ROUTE SERIES** were printed down the left hand edge of the address side which also carried in the centre, enclosed in a rectangular box, the two shields of the company crest above **G.W.R.**

1. Turbine Steamer
2. Drawing Room, Turbine Steamer
3. Saloon, Turbine Steamer
4. Steamer alongside at Fishguard

Locomotives - 1910

A pair of black and white photographic cards was published around 1910 and, whilst not forming part of Series 6, they are very similar in appearance. The picture side follows the same style and the address side is similar but the shields are slightly bigger and the typeface used differs slightly.

Great Western Royal Train, Engine "King Edward"
G.W.R. Pacific Type Locomotive. "The Great Bear"

Cornish Riviera - 1913

Published in 1913, this single card was printed by *Messrs. Andrew Reid & Co.* of Newcastle-on-Tyne. On the picture side it carried the words **Pictorial Poster Fac-simile**. at the top left, and the printer's name at the bottom right, both within the white border surrounding the poster image. The address side bore no company branding.

Posters - c1915

A pair of coloured poster cards printed for the GWR by *ACME Press* was published around 1915. The picture side depicts a poster with no additional wording, and the address side is plain with no company branding.

The Cornish Riviera
Glorious Devon

Ambulance Train - 1915

Between 1915 and 1916 the Great Western Railway built a number of special ambulance trains for use both at home and in Europe and published a set of five half tone postcards illustrating typical elements of such trains.

The postcards were sold as a set in a special packet for 3d (three pence). The set is believed to have been first published in 1915 and again in 1916, and were also overprinted for correspondence purposes. Whilst the postcards themselves bore no branding or writing, other than the words 'POST CARD' on the address side, they all bore as part of their title *Continental Ambulance Train - Built at G.W.R. Works, Swindon, 1915*. The packet which was printed in red did additionally carry the name of the company. Four of the half tone cards were printed in a pinkish sepia, whilst that showing the whole fifteen coach train was a pale green.

1. Continental Ambulance Train
2. Kitchen
3. Treatment Room, Pharmacy Car
4. Ward Car
5. Ward Car for Sitting Patients

Docks Series - 1922

Thought to have been issued in 1922, or possibly as late as 1923/4, this series of twelve photographic cards was printed by *The Autotype Company Ltd.* of London. The picture side carried the name of the printer with the title of the card being printed beneath the image and *Great Western Railway* underneath. The address side bore no mention of the GWR or company crest, but each did carry a brief description of the port illustrated at the top of the correspondence panel.

1. Vessel Loading Coal at Penarth Dock
2. Aerial view -Barry Docks
3. Aerial View - No.2 Dock, Barry
4. Aerial View - Alexandra Docks, Newport
5. General View of Coal Hoists at Alexandra Docks, Newport
6. Aerial View - Millbay Docks, Plymouth
7. Aerial View - Queen Alexandra Dock, Cardiff
8. General View of Queen Alexandra Dock, Cardiff
9. Aerial View - Roath Dock and Basin, Cardiff
10. General View, King's Dock, Swansea
11. Oil Tankers at Swansea Docks
12. Port Talbot, Loading Coal by Electric Belt Conveyor

Sunny Falmouth - c1923

This single poster card was published in about 1923. The picture side depicts the black bordered poster surrounded by a plain white border with no additional wording, dividing the address side the printer is noted as being **John Waddington Ltd., Leeds and London.**, but it is otherwise plain with no GWR branding.

G.W.R. Express Passenger Engine - 1923

Originally published by the *Locomotive Publishing Co. Ltd.*, whose name was still printed at the foot of the address side, this single full colour card was re-issued by the G.W.R. in 1923. It illustrated the engine 'Caerphilly Castle' and carried technical details of the 'Castle' class locomotives overprinted on the front but bore no G.W.R. branding. These cards were used for a variety of publicity purposes being overprinted on the address side.

G.W.R. Locomotives - 1924

The first of this pair of photogravure cards was published in 1924 to publicise the new 'Castle' class of locomotive. The three locomotives illustrated were 'North Star', 'Lord of the Isles' and 'Caerphilly Castle' along with some technical notes. It is felt that this card was published to coincide with the Wembley Empire Exhibition at which the recently built 'Caerphilly Castle' was displayed on the GWR stand in the Palace of Engineering from May to October 1924. During the same period in 1925 its place was taken by 'Pendennis Castle' and the second card was possibly produced at that time. Both cards carried the twin shield and twin scroll company device on the address side, down the left side of which was printed the two lines **Published by the Great Western Railway, Paddington Station, London, W.2 and Felix J. C. Pole, General Manager.**

G.W.R. Locomotives, 1838-1923 reproduced to the same scale
"Pendennis Castle"

Cathedrals - Second Series - 1925

A further series of Cathedrals cards was published in 1925. These cards did not carry a series number on the address side, otherwise they were identical in all respects to those issued as Series 12 with **Published by the Great Western Railway, Paddington Station, London, W.2 and Felix J. C. Pole, General Manager** together with a brief history and description of the cathedral illustrated being printed in the address panel on the back. It is not known how many different cards comprised the series but there are believed to have been possibly as many as 30.

The Nave, Bath Abbey
Llandaff Cathedral, West Front
Oxford, Christ Church Chapel, Watching Chamber of the Shrine of St.Frideswide
Wells Cathedral, The Nave

'King' class locomotive - 1927

This pair of photographic cards was published in 1927 to publicise the new 'King' class of locomotive. These cards carried no company device or publisher details and the type face used on the address side did vary between different editions. The card illustrating 'King George V' carried a short description on the front and technical details of the depicted engines was featured on the multi-view card.

"King George V"
"King, "Castle", and "Star" class locomotives, "The Great Bear"

1928 - G.W.R. Express Passenger

Locomotive "King George V"

In 1928 the GWR published a book written by W. G. Chapman entitled *The "King" of Railway Locomotives* which contained a fold-out coloured plate depicting locomotive 6000 'King George V'. This unique large folded card, also published in 1928, used that same image together with technical specification on the inside. The outside 'back' of the card describe the attributes of the locomotives, listed the names and numbers of the twenty members of that class and detailed the trip made to America by locomotive 6000 as part of the Baltimore and Ohio Railway centenary celebrations. The 'front' of the outside took the form of a standard postcard and carried the company crest of two shields each with its own scroll beneath. There was a round gummed label with which to seal the card closed for posting.

1928 - G.W.R. Cornish Riviera

Express

This second postcard takes exactly the same form as the one described above. It shows the Cornish Riviera Express travelling at speed hauled by locomotive 6000 'King George V' which carries the bell commemorating its visit to America. It is presumed therefore that it was probably published at the same time, or soon after, the folded postcard above. The painting is signed by the artist, but we have been unable to make out what it says. The outside 'back' of the card briefly describes the history of the famous named train which ran from Paddington to Plymouth. It goes on to say that with the introduction of the 'King' class of locomotive the booked time for the trip had been reduced by 7 minutes to exactly four hours. Once again it says *GWR The Hallmark of Transport* below the text box.

The Western Land Series - 1938

This set of 8 colour postcards, based on paintings by Leonard Richmond, was published at the the same time as a free booklet entitled 'The Western Land'. They were produced by W.G.Briggs & Co., Ltd., Engravers, Photographers and Artists of London and carried their name and company logo together with the image title on the address side. Whilst the GWR company crest or name was not included, each card had printed down the left hand side **To learn more of this delightful district write for free booklet "The Western Land" to the Superintendent [sic] of the Line, G.W.R., Paddington Station, London, W.2.** These cards were unusual in that they were larger than standard, being 5½"x4⅛" in size.

1. St. Michael's Mount
2. Newlyn, near Penzance
3. Mousehole, near Penzance
4. Abbey Walk, Penzance
5. Morrab Gardens, Penzance
6. St. Ives Boats
7. The Approach to Lacriva Cove
8. Porthcurnow, showing Logan Rock

Hotel Cards

The Great Western Railway either owned or operated a total of six large hotels, although not all at the same time, and only four of them utilised official GWR postcards as far as we can tell. The address side of these cards differed being either plain, bearing two shields with either a single or double scroll beneath, or either a small or larger GWR roundel.

Great Western Royal Hotel, Paddington

- c1923 Front/side view of hotel on left hand side with writing space, address and contact details on right. Address side has two shield crest with single scroll below.

Tregenna Castle Hotel, St. Ives

- c1920 Vertical format card with front view of hotel from right at top half in reddish-brown half tone and contact details at foot of card. Address side has two shield crest with double scroll below.
- C1929 Artist impression of hotel from tennis courts with two shield crest and double scroll at top middle and early phone number at foot. Plain address side.
- C1930 As above, but with later telephone numbers.
- c1930 Distant vignette view in winter with details at foot. Plain address side.
- c1934 Hotel front from driveway with similar details at foot. Small GWR roundel top left on address side.
- c1934 As above, but with large GWR roundel top left on address side.

Fishguard Bay Hotel

- 1906/7 Vertical format card with vignetted front view of original hotel building from left at top half in half tone and contact details at foot of card. Address side has two shield crest with double scroll below.
- c1920 Photogravure card showing the large new extension and gardens and contact details at foot. With two shields and single scroll top left on address side.
- c1934 As above, but with small GWR roundel top left on address side.
- c1934 As above, but with large GWR roundel top left on address side.

Manor House Hotel, North Bovey

- c1929 View of hotel front from the right with contact details at foot. With two shields and single scroll top left on address side.
- c1929 As above, but with two shields and single scroll top left on address side.
- c1934 View as above, but taken from slightly further away. With small GWR roundel top left on address side.
- c1934 As above, but with large GWR roundel top left on address side.

Correspondence Cards

The Great Western Railway made use of a huge variety of picture correspondence cards. Many of these cards were printed by Wyndham & Co. Ltd. of Acton using their own images, but some were based on existing GWR designs. The first picture correspondence cards appeared in 1904. This small series of cards depicted various resorts served by the GWR, each carrying a three-quarter size image surrounded by a decorative frame with a description headed by the company crest of two shields together with the wording **GREAT WESTERN RAILWAY** on the right.

1904 Series

Burnham Beeches
Chester
Clifton
Dartmouth
Falmouth
Maidenhead
Malvern
Newquay
St. Ives. The Naples of England
St. Michael's Mount
Shakespeare's Birthplace
Tenby
Torquay
Weymouth
Windsor

1909 Fishguard Route Series

The four standard GWR *Fishguard Route Series* cards were used from about 1909 with overprinted backs. These correspondence cards had a reference number printed in the top left corner of the address side, an example being **(1525 P.) W/177/5/09**. indicating that it was printed in 1909 by Wyndhams.

Turbine Steamer
Drawing Room, Turbine Steamer
Saloon, Turbine Steamer
Steamer alongside at Fishguard

1910 Fine Art Engravings Series

In December 1909 the GWR started to sell a selection of fine art engravings at one shilling each. A small selection of these were used on this series of cards. The address side had *Great Western Railway* printed across the top, a pro-forma acknowledgement form and a reference **(1525 P) W/177/6/10** indicating that it was printed in 1910 by Wyndhams. A small half tone image filled the left hand of the address side together with its description and details promoting the range of engravings available.

Cardiff Castle, Interior
Devonport, Royal Naval Barracks
Malvern
Salcombe, North Sands and Bolt Head
Wolverhampton

1913-1915 Series

One further set of cards is thought to have been used between about 1913 and 1915, printed in green, brown or grey. Regardless of the colour used for the monochrome image on the front, the address sides were always printed in green and had the double shield company crest between the words *Post* and *Card*. Many of these correspondence cards had a reference number printed in the top left corner of the address side, an example being **(1525 P.) W/100/9/14**, indicating that it was printed in 1914 by Wyndhams. Titles on the picture side of the cards were written in either black or white together with the letters G.W.R. which were in the bottom right hand corner.

Bath Abbey
Roman Baths, Bath
Pittville Lake, Cheltenham
Watersmeet, Lynmouth
The Harbour, Lynmouth
Ivy Scar Rock, Malvern
The Beach, Minehead
The Parade, Penzance
St. Ives
Shakespeare Memorial Theatre, Stratford-on-Avon
The Wye, Symonds Yat
South Sands, Tenby
Oddicombe Beach, Torquay
Weston-Super-Mare
Weymouth
Worcester Cathedral

Wyndham Series

A vast series of correspondence cards came into use from about 1912 utilising standard Wyndham cards. These often had a blue outlined square near the top left corner of the address side containing the words *In reply quote this reference*. Next to this, all those that we have seen also had printed **(P1525 P.)**, the significance of this is unknown. The address side of the cards were printed in red with the pro-forma correspondence wording over-printed in blue.

There were two slight variations of these cards which seem to have been issued concurrently. One series had a white border around the picture within which the image title and the reference number (for example 3907 *The "Wyndham" Series*.) was printed, in either red or black. The other had the words ***The "WYNDHAM" Series*** printed in red diagonally in the top left corner on the address side, and the image title together with its reference number (for example W8122) in white cursive script on the front.

W1078 Grammar School & Wye Bridge, Monmouth
W1107 Martin's Tower, Chepstow Castle
W1141 Wye Bridge, Monmouth
W1234 Burnham Beeches
W1649 The Wharves, St Helier, Jersey
W1662 Cary Arms Hotel, Babbacombe
W1768 Brasenose College Quad, Oxford.

W1779 Founders Tower, Magdalen College, Oxford
W2318 Old Cottage at Lynmouth
W2862 Chepstow Castle
W3213 Adelphi Hotel, Liverpool
W3812 Red Lion Court, Clovelly
W4043 Castle Street & Town Hall, Liverpool
W4534 Marlow Bridge and Church
W4680 Rozel Harbour, Jersey
W4987 The River, Oxford
W5640 West Front, St. Joseph's Chapel, Glastonbury
W5766 Walpole Park, Ealing
W5775 Haven Green, Ealing
W6164 Over Mannow, Monmouth
W6872 Folly Bridge, Oxford
W7373 Newton Mill, Newton Abbot
W7661 The Castle, Dartmouth
W78?? Courtenay Park, Newton-Abbot
W7979 Market Day, Newton Abbot
W7982 Ogwell Mill, Newton Abbot
W8103 (Middle) Ferry, Cookham
W8122 "B" House, Marlborough College
W8266 Mutlet Plain, Plymouth
W9119 Church & Castle, Dartmouth

1359 Sandsfoot Castle, Weymouth
1623 St. Brelade's Bay, Jersey
2309 Upper Falls, Lynmouth
3731 Harbour & Cliff Railway, Lynmouth
3739 Valley of Rocks, Lynmouth
3746 At Watersmeet, Lynmouth
3748 Upper Falls, Watersmeet, Lynmouth
3859 Watersmeet, Lynmouth
4567 Sark Post Office
4668 St. Martin's Road, St. Helier – in collection
5898 The Deanery & Cathedral, Winchester
5907 St. Cross, near Winchester
6356 The Governor's Office, H.M. Convict Prison, Portland
6487 Dorchester
6856 Weir & Lock, Great Marlow

Registration cards

Correspondence cards were produced specifically for use by the Registration Office which was responsible for keeping a register of GWR shareholders. It was based at the head offices in Paddington, but was one of twelve departments temporarily relocated to a purpose built site at Aldermaston in Berkshire from early 1940. It is possible that the cards depicting GWR hotels may have been made available to hotel guests, however, we have only seen examples which were produced for use by the GWR Registration Office.

Claude Buckle sketches - late 1920s to early 1930s

We have seen four examples of cards featuring pencil sketches by Claude H. Buckle.

FISHGUARD BAY HOTEL, Goodwick, Pembrokeshire
Ideally situated, overlooking Fishguard Harbour. Golf, Tennis, River and Deep Sea Fishing.

HEREFORD - On the Great Western Railway.
Centre for the Wye Valley

MANOR HOUSE HOTEL - A select hotel on the edge of Dartmoor

TREGENNA CASTLE HOTEL, St. Ives, Cornwall
A most comfortable Hotel in 100 acre grounds. Mild and equable climate, 9 hole Putting Course

The two registrars named on these card are A.C. Barnes. and W. Heditch.

Charles Mayo sketches – mid 1930s

A small series was produced from about 1936 with pencil sketches of various GWR hotels by the artist Charles Mayo. We have seen cards printed with the names of two different registrars, A.C. Barnes and S.G. Voles, but there may have been others.

Tregenna Castle Hotel – St. Ives, Cornwall
Fishguard Bay Hotel – Goodwick, Pemb.
Manor House Hotel – North Bovey