

# Culham ticket office

**CRAIG TILEY** provides this overview of the former station building in Oxfordshire, which dates from 1844 and survives today as a relic from Brunel's broad gauge era. June this year will see a series of special events take place at locations along the Didcot to Oxford line – including Culham – to celebrate the route's 175th anniversary. Scale drawings by **STEVE CROUCHER**.

The old ticket office is all that remains of the original buildings at Culham station, which opened on 12 June 1844, and is a remarkable surviving example of Brunelian Tudor Gothic station architecture. (The station was actually named 'Abingdon Road' at first, being changed to 'Culham' in 1856 upon the opening of the Abingdon branch.)

The ticket office is of red brick construction, with window surrounds and quoins etc. of grey stone. The canopy is supported by large wooden beams, which rest on top of the walls and project out as far as the decorative wooden valancing, which was itself a later addition to the structure.

Although the station has remained open throughout its 175 year history, the building (situated on the 'up' platform) closed in the mid-1970s. It was occupied by various tenants for business use during the subsequent years and in 2003 it was the subject of an extensive renovation project by Network Rail and since 2014 has been occupied by Entikera Ltd.

The firm has opened its offices to the public on a number of occasions as part of the national Heritage Open Days scheme. Interested visitors are always welcome, however, during normal office hours (see website for further details).

The ticket office forms part of a group of contemporary structures, which includes the original brick road bridge, the Railway Inn (built in 1846) and Thame Lane bridge. Although the future of the station building is secure (it was awarded Grade II\* listing by English



▲ A 2018-dated view of the former ticket office, which is no longer in railway use. Photo: Bill Wright



Forecourt Elevation



Platform Elevation

Note: canopy valancing removed for clarity





▲ The view from the roadside approach recorded on 17 October 1964. Note the lack of canopy valancing along this side. Photo: Colour Rail



▲ The north end of the structure, with a Class 165 DMU departing for Didcot on 18 October 2018. Photo: Bill Wright

Heritage in 1975), there are set to be significant changes to the surrounding station site over the course of the next few years, with electrification of the route and extensions to the platforms planned.

### In model form

Brunel's design has been a popular subject in model form over the years; examples can be seen currently as part of Pendon Museum's 4mm scale *Vale Scene*, and in 7mm scale on the Cornwall

O Gauge Group's layout *Weatherbury Magna*, which was featured in our January and February 2019 editions of RM.

Laser-cut wooden kits for the structure in 4mm and 7mm scales are available from Timber Tracks – construction of the 4mm version being described in our April 2015 issue.

Scale drawings of the ticket office at Culham were published in the May 1974 edition of RAILWAY MODELLER, with further notes and photos included in the June 1974 issue.

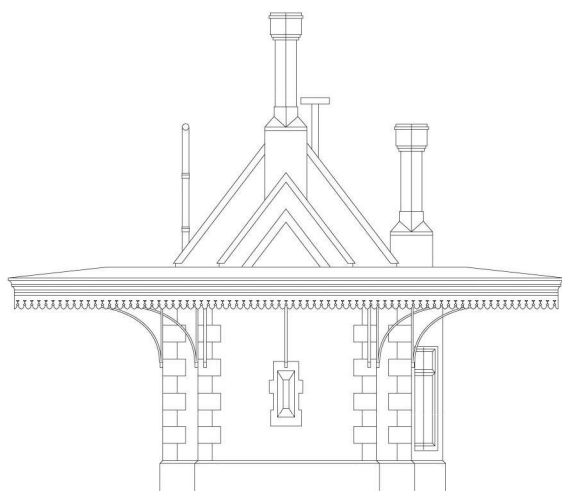
A 'download and print' kit is also available, free of charge from the Culham station website (see 'Further information' box).

### Notes on the drawings

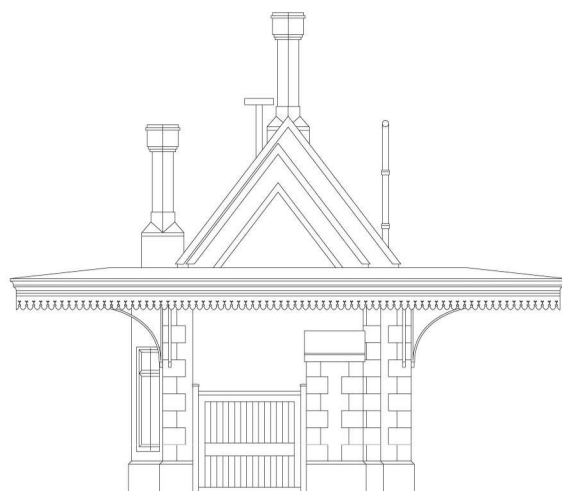
The drawings reproduced here are printed at 2mm scale. Certain details have been omitted for clarity, including the brickwork and roof tiles. Sections of the canopy valancing are shown cut-away to illustrate the supporting beams. Finally, only the outlines of the canopy support brackets have been drawn.

### Further information

For further information relating to the history of Culham station, including archive photos and links to original drawings, visit: [www.culhamstation.co.uk](http://www.culhamstation.co.uk)



End Elevation  
(Ladies Cloakroom & WC)



End Elevation  
(Gents Urinal & WC)

### 175th anniversary events

Culham station building is set to be in the limelight on 15 June 2019, when there will be special events taking place at locations between Didcot and Oxford to mark 175 years since the branch was opened by the Great Western Railway.

The station building at Culham will be open to the public between 0900 and 1600. Inside there will be displays of original GWR memorabilia, items for sale and souvenirs to collect.

At Appleford there will be a steam-themed fête, whilst at Grandpont in Oxford (near the site of the city's first 1844-built railway station), there is planned to be miniature train rides, working model displays and exhibitions about the history of Oxford's railways.

A special combined travel ticket will be available for the day (priced £19.50 per person), allowing unlimited travel to and from the venues/stations between Oxford and Didcot, by bus or train (on Great Western Railway services).

Included in the price will be entry to Didcot Railway Centre, which will be running a special Steam Day, with locomotives which served on the Didcot to Oxford line on display.

Providing additional interest will be a railtour hauled by No.60103 *Flying Scotsman*, which is scheduled to traverse the Didcot – Oxford route early on the Saturday morning.

For further information about these events and ticket details visit: [www.didcotoxfordgwr175.org](http://www.didcotoxfordgwr175.org)

